



Award of Four Year ICT Framework - Case Study

Bridge Academy Hackney



Bridge Academy Hackney – Award of Four Year ICT Framework

Contact Details: Peter Lilja, IT Manager, 020 7729 4623

Address Details: Audrey Street, Hackney, E2 8QH

The Bridge Academy, Hackney is a mixed, non-denominational school for 11 - 18 year olds and welcomed its first intake of Year 7 girls and boys when it opened in September 2007.

In its first year the Academy will be based in temporary accommodation located in Audrey Street adjacent to Haggerston Park. In summer 2008 the Academy we will move to their permanent, purpose-built home on the site of the former Laburnum Primary School, Laburnum Street, South Hackney.

By 2013 the Academy will cater for 1,150 students, offering 900 places for 11–16 year olds and a sixth form for 250 students. Specialising in music and mathematics, The Academy will teach a broad and rich curriculum and be a local school for students of all abilities.

The Academy has been sponsored by UBS is one of the world's leading financial firms. The Bridge Academy is part of the continuing commitment of the firm and its staff to the drive for improved educational standards in Hackney. The Bridge Academy will be at the heart of the community in South Hackney and will give young people a rich and rewarding experience.

The Academy has already forged relationships with the Shoreditch Trust, Laburnum Boat Club, Haggerston Youth Inclusion Project and SKY Partnership. An instrumental taster project to support the development of music with local primary schools has continued with London Symphony Orchestra (LSO) Discovery and the Hackney Music Service. Laburnum Boat Club has also begun a three-year project with the Academy's local primary schools to discover and to make full educational and recreational use of the canal and the surrounding area.

Specific partnerships have been established to enable the students to focus on the Academy's specialisms of mathematics and music in their first year:

- Geometrical Design is an innovative mathematics and school grounds project, run in collaboration with Snug & Outdoor - an award-winning, artist-led company. It will complement the flagship architectural programme and demonstrate The Bridge Academy's commitment to delivering a high quality indoor and outdoor learning environment for students in Hackney.
- Hackney Empire is a leading London theatre, based in the heart of the Cultural Borough of the London 2012 Olympic Games. Its 'Take it to the Bridge' programme is a vocational educational project, supported by local artists, where Academy students will develop a wide variety of skills related directly to employment in the creative industries, as well as transferable skills such as teamwork, presentation and negotiation.

European Electronique has been chosen to work with the Bridge Academy, UBS, Mace Plus and their partners for the next four years. Initially our work has ensured that the academy is provided 1st class temporary accommodation in summer 2007. Following this we are all working to ensure that ICT is built and planned into

the fabric of a truly magnificent new academy building, including the seamless migration of ICT equipment and skills from the temporary building during summer 2008.

Detailed below is a brief statement relating to each of the key areas of the project;

Converged Infrastructure – Design, Implementation and Full Managed Service

Utilising Cisco's industry leading technology, the network was built around two fully resilient Cisco Catalyst 3750E switches. The network provides fault tolerant wire speed gigabit connectivity to servers, edge switches and 802.1x authenticated users. Power is provided via 3750 power over Ethernet switches, delivering electricity to all data sockets to accommodate Wireless Access Points and IP Telephones. The temporary accommodation network was designed to provide the Academy with a fully redundant infrastructure, which can be easily migrated into a much larger solution in the new building.

802.1x Authentication (dynamic VLAN allocation) has been installed and configured to enable users and IP devices to dynamically access secured network services and resources from any network port. This basically means that any data socket within the building can be used for different user types, such as Staff or Curriculum, or devices, such as Wireless Access Points and IP Telephones, without the need to re-patch or reconfigure the network.

Cisco Centralised Wireless technology is used extensively to ensure Wireless access is available throughout the whole building. This centrally controlled solution dynamically tunes the wireless environment, to make it possible for multi access point enabled Laptop trolleys to be utilised anywhere in the building. 802.1x Authentication is used to secure the wireless network, controlling wireless access to the Academy's network, applications and resources for Staff, Students and Guests.

Network Services

European Electronique delivered a complete range of network services based on Microsoft's Server 2003, Exchange, ISA and SQL technologies. An industry leading fully resilient HP server and storage infrastructure has been provided to ensure 100% availability to Academy networked services and user data stores. All services and user data stores are fully backed up, both on and off line, and archived to removable tape storage within two high capacity HP automated Tape Libraries. All data and services are protected from Virus' by Symantec Enterprise Manager Software.

Software Systems

European Electronique delivered a complete range of network operating systems and applications based on Microsoft's Server 2003, Exchange, ISA and SQL technologies. Sentinels Ranger Suite of Products was installed and configured to provide the Academy with Desktop Security, Remote Control, Printing Control and Management Reporting. Surf Control and Symantec Enterprise Manager were installed and configured to provide secure controlled Internet access and Anti Virus protection.

Alteris was provided to allow simple PC and Laptop image creation and delivery, Veritas Backup Exec and agents were installed to allow the backup of all services and user data stores.

The Academy procured a Microsoft Schools Agreement through European Electronique to licence their all their Microsoft requirements.

Card Systems and MIS integration

European Electronique provided an EasyTrace Cashless Catering, Micro librarian Library Management system and a Safecom pull printing solution. All Academy students and staff have been given MiFare photo ID cards, which are configured to allow secure access the Catering solution, Library, and Printing system. All card systems are integrated with the Academy's SIMS Management Information System offering real-time access to student information. In 2008 these systems will also be linked to an access control solution and a library security system.

Shirelands Learning Environment

European Electronique has worked with the Bridge Academy and the Shirelands Learning Platform to ensure that the VLE solution is assessable from both inside and outside of the Academy.

“Follow Me” Printing, Scanning and Copying

In order to provide the lowest possible total cost of ownership, European Electronique provided a leading edge Hewlett Packard Safecom multi function printing solution. The solution enables staff and students to "pull" print jobs from a central server to any printer within the Academy, thus ensuring the minimal use of ink and paper resource. The solution will be expanded upon during the relocation to the new Academy building in 2008. In addition the solution is interfaced via the student's Academy Mifare ID card which can be allocated credits for different types of printing activity. Please Card Services see below.

UPS Power Management

Uninterruptible Power Supplies were supplied and installed by European Electronique, providing electrical conditioning and emergency power backup to the Academy infrastructure in the event of a power spikes and outages.

Client Devices

HP and Dell "business class" PC and notebooks have been installed, which included the consultancy, design, creation, testing and rollout of software images and the physical securing and cabling of devices into The Academy's ICT furniture.

Mobile Classrooms (Laptop Storage)

European Electronique provided custom-made wireless enabled security trolleys for safe storage and recharge of Laptops. Wireless Access points have been integrated with each Lapsafe to enable a minimum of thirty wireless connected laptops to log on to the network in under 60 seconds.

Classroom Presentation Systems

European Electronique supplied and integrated classroom presentation systems into every classroom and breakout area. Equipment was either wall mounted or secured inside teacher's lecterns. Items installed included, Smart Interactive Whiteboards with integrated projectors and speakers.

Peripheral Devices

European Electronique has and will provide much in the way of other technology that does not necessarily fit into a single category. Examples include PDAs, digital cameras and camcorders.

Fully Managed Service and Becta FITS compliance

European Electronique has been entrusted with supporting the Academy's infrastructure. This involves providing a fully managed service for the Academy Network Infrastructure, including proactive monitoring of the network and services. Unlimited telephone support during office hours and remote access for systems was provided 3rd line problem resolution and onsite engineering where required. A leading helpdesk with asset management system was provided and installed for the Academy ICT Staff to report track and catalogue, all faults adds moves and changes.

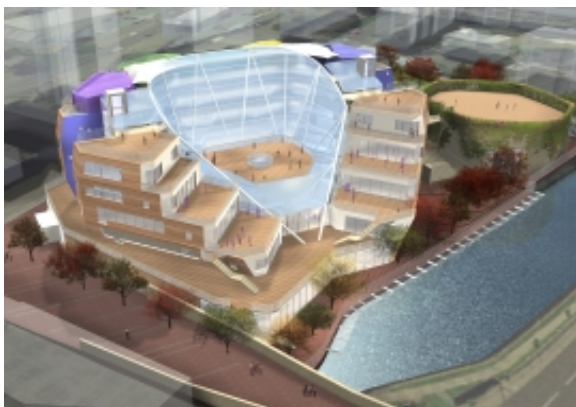
Project Management

European Electronique supplied, installed, configured and project managed the whole ICT installation for the Academy. European Electronique worked very closely with all stakeholders including consultants, construction, FF&E, M&E and sponsors to ensure that ICT was at the forefront of building design and operation.

Through stringent project management and management reporting by European Electronique the Academy has been delivered a 21st century ICT solution that exceeded expectations, fulfilled user requirements and met financial constraints. The Temporary Accommodation element of this two year project was delivered on time and on budget in September 2007. European Electronique is working with Bridge Academy to relocate and seamlessly migrate the existing equipment and services with new equipment and services once the permanent building is ready for occupation in Spring / Summer 2008.

Training

As a new institution, training was a particularly key element to the project. Full training has been provided to the IT staff on all aspects of the solution. This involved a mixture of manufacturer training courses and training from European Electronique training staff. In addition to this it was considered prudent to make training available to all the teaching and curriculum staff. This was provided in the form of open IT workshops, specific workshops tailored to specialist user groups and floor walking to provide live assistance in the initial weeks of the Academy opening.



Bridge Academy's stunning new build scheduled for opening summer 2008